

® **INREKA PLOŠINY**

IPKT 28-3

ON ŠASI TATRA 815-16 WR 45/11T4x4

BASIC INFORMATION

The work platform consists from two side by side hinge-connected arms, third arm is hinge-connected with second arm and it is placing along with work cage on rear end of vehicle. Arm I is single, two-piece arm II is draw out telescopic. Arm III has range of movement 180°. The work cage is for three persons with implements to 350kg + 10%. The turntable is with unrestricted turning in both directions. Hydraulic stability props allows activity on slope 6°. Construction of work platform allows fallback arm II over 5° against arm I, this fallback allows to lounch work cage to ground. The frame has floor from expanded metal. Standart fittings are 5 lockable plastic cases, 2 warning beacons and reflector for lighting work place.



DRIVE HYDRAULIC PUMP

Hydraulic pump is fundamental source compressive oil. Pump is driven vehicle engine. Vehicle engine is possible start and conk out from work cage and from control console near turntable. Hydraulic pump is alternative source compressive oil, where pump is driven by electric motor 3x400V/50HZ/11kW (speeds of all movements are continue). Electric motor is possible button and shut off from both control places.

HYDRAULIC SYSTEM

Hydraulic system safeguards supplies compressive oil for all hydraulic circuits work platforms. All working movements are provided hydraulic. Direct is control movement of props. Working movements of super-structure is possible control from two location. This control is from work cage or from location near turntable. Control is by the help of proportional drivers with preselection, where drivers are controlled driving system. Control location choose switch-over of commutator. This commutator is placed on location near turntable. Two hydraulic cylinders ensure buffering of working cage. The hydraulic cylinders are controlled by electrohydraulic balancing system.

CARRIAGE UNIT

The work platform is possible mount on any undercarriage, where undercarriage has capacity weight except crew minimum 8000 kg. On the picture the work platform is mounted on undercarriage TATRA 815 16 WR 45/11T 4x4 and undercarriage is tight linked to work platform. Whole set has favourable weight, small transport measurements and very good patency by terrain.

TECHNICAL DATA

Transport measurement:

- size	10,5m
- width	2,5m
- height	3,7m

Work reach:

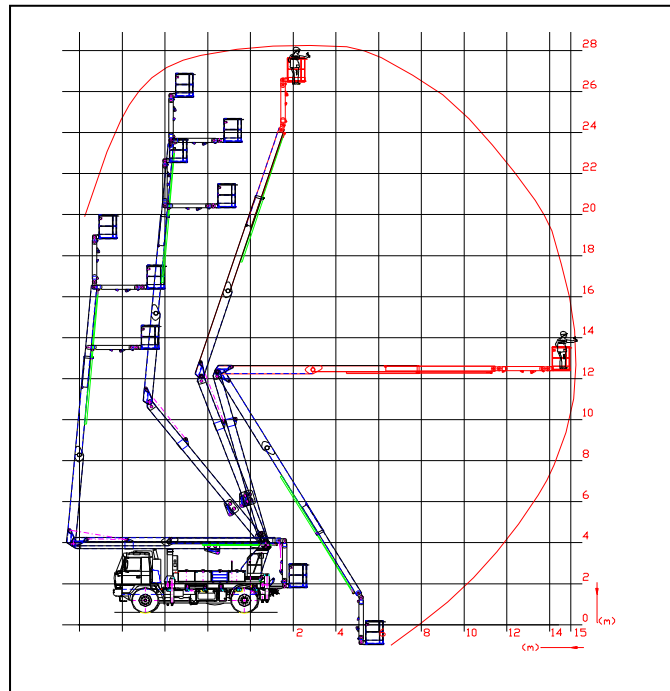
- height	28,0m
- side reach	15,0m
- turning	no limits
- width props	4,5m

Work cage:

- proportions	1,8 x 1,1 m
- maximum load	350kg+10%

Weight:

- platform without undercarriage	8650kg
- undercarriage TATRA 815	8000kg
- curb weight with driver	16650kg



Working diagram

SAFETY EQUIPMENT

The hydraulic cylinders are procurement locks. Dangerous end positions are secured 2x. Two methods of emergency starting. The equipment against overfreight working cage. The switch knob „TOTAL STOP“. Basic and complementary protection against electric shock.

EQUIPMENT OPTIONS

Alternative drive by electric motor 3x400V/50Hz. Emergency drive by electric motor 3x400V/50Hz-2,2kW where drive is driven by electric generator. The electric pulley is placed in working cage. Adjustable headlight in working cage. Switching on of all aggregates from working cage. Handrail of work cage is incrusted by wood. Shelf for putting off chain saw outside the working cage. The box for common implements on railing of work cage. Gripping of tools for work on electric equipment. The case on storage of electric pulley.

SUPPLIER

INREKA PLOŠINY
Uherský Brod
Rudice 231
687 32 Nezdenice

tel.: (+420) 572 637 722
(+420) 572 630 339
(+420) 603 803 192
(+420) 774 949 385
fax: (+420) 572 630 343

e-mail: inreka@inreka-plosiny.cz
<http://www.inreka-plosiny.cz>